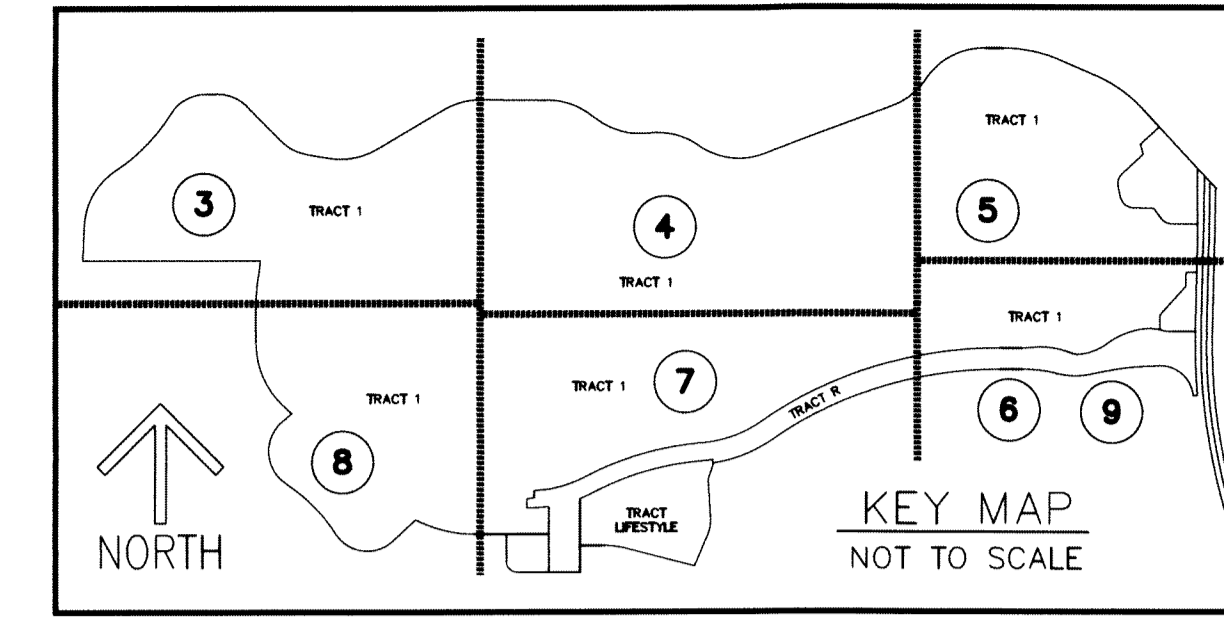


PANTHER NATIONAL AT AVENIR

BEING A REPLAT OF A PORTION OF AVENIR, PARCEL "A-1",
AS RECORDED IN PLAT BOOK 127, PAGES 85 THROUGH 109 OF
THE PUBLIC RECORDS OF PALM BEACH COUNTY, FLORIDA,
LYING IN SECTIONS 4, 8, & 9, TOWNSHIP 42 SOUTH, RANGE 41 EAST,
CITY OF PALM BEACH GARDENS, PALM BEACH COUNTY, FLORIDA.

THIS INSTRUMENT PREPARED BY
RONNIE L. FURNISS
OF
CAULFIELD and WHEELER, INC.
SURVEYORS - ENGINEERS - PLANNERS
7900 GLADES ROAD, SUITE 100
BOCA RATON, FLORIDA 33434 - (561)392-1991
CERTIFICATE OF AUTHORIZATION NO. LB3591
JULY 2022



26

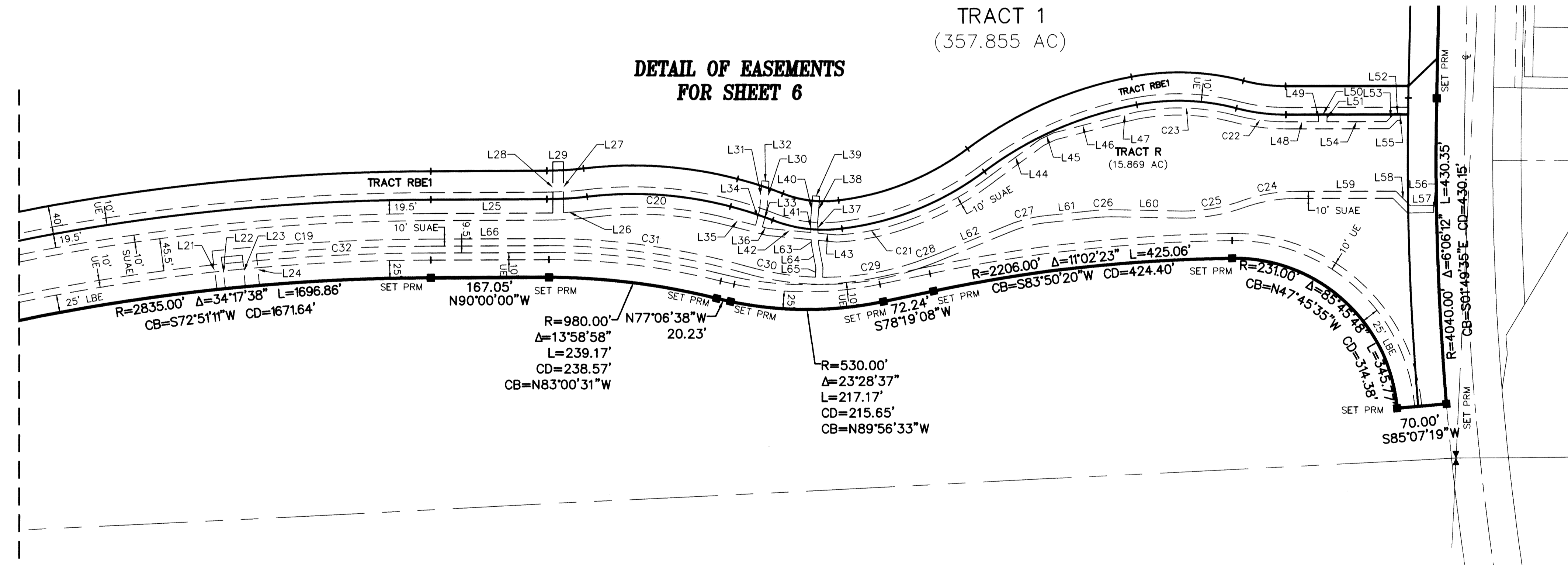
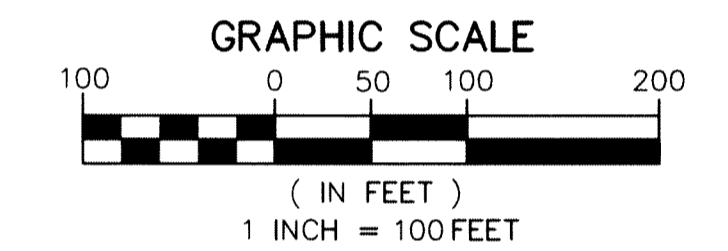
SHEET 9 OF 9

Line #	Direction	Length
L21	S7°28'55"E	54.52
L22	S7°27'29"E	44.52
L23	S5°24'02"E	44.50
L24	S5°24'02"E	44.50
L25	S89°58'32"W	172.54
L26	S86°12'48"W	16.53
L27	N0°00'00"E	71.32
L28	S0°00'00"E	71.82
L29	N90°00'00"W	15.00
L30	S4°22'41"W	41.17
L31	N4°22'41"E	40.27
L32	S85°37'19"E	10.00
L33	S14°35'52"W	23.78
L34	N14°35'52"E	23.01
L35	S75°53'51"E	52.32
L36	S75°24'08"E	8.42

Line #	Direction	Length
L37	S2°13'44"E	15.14
L38	S4°22'41"W	36.89
L39	S85°37'19"E	10.00
L40	N4°22'41"E	37.47
L41	N2°13'44"W	14.37
L42	S84°33'29"E	60.60
L43	S84°33'29"E	26.38
L44	S54°02'31"W	84.95
L45	S64°38'05"W	21.23
L46	S75°13'39"W	84.95
L47	S77°19'39"W	37.52
L48	N89°59'14"W	46.28
L49	S1°04'18"W	10.00
L50	N90°00'00"E	12.00
L51	S1°04'18"W	10.00
L52	N90°00'00"E	8.06

Line #	Direction	Length
L53	S45°00'00"W	16.38
L54	N90°00'00"E	83.96
L55	S0°37'40"W	10.00
L56	N0°58'45"W	10.00
L57	N89°01'15"E	32.70
L58	N45°00'00"W	29.24
L59	N90°00'00"W	141.90
L60	N88°49'05"W	91.55
L61	S83°44'30"W	64.99
L62	N68°05'52"E	110.01
L63	S2°13'44"E	6.29
L64	S10°29'48"E	33.49
L65	S1°08'11"W	13.36
L66	N90°00'00"W	167.05

Curve #	DELTA	RADIUS	LENGTH	CHORD BEARING	CHORD DISTANCE
C19	6°08'28"	2889.50'	309.71'	S86° 55' 46"W	309.56'
C20	20°19'43"	512.00'	181.66'	N87° 25' 57"W	180.71'
C21	16°45'48"	343.00'	100.35'	N78° 55' 06"E	100.00'
C22	14°40'57"	285.00'	73.03'	S82° 39' 32"E	72.83'
C23	25°15'18"	312.00'	137.53'	N87° 56' 42"W	136.42'
C24	19°36'25"	223.00'	76.31'	S80° 11' 48"W	75.94'
C25	19°54'59"	252.00'	87.60'	N80° 21' 05"E	87.16'
C26	7°26'25"	291.00'	37.79'	S87° 27' 43"W	37.76'
C27	15°38'38"	191.00'	52.15'	S75° 55' 11"W	51.99'
C28	2°58'46"	488.00'	25.38'	N69° 35' 15"E	25.37'
C29	19°50'44"	402.00'	139.24'	N80° 30' 03"E	138.55'
C30	13°52'40"	402.00'	97.37'	S81° 12' 43"E	97.13'
C31	15°43'37"	1034.50'	283.95'	N82° 08' 12"W	283.06'
C32	4°54'20"	2879.50'	246.53'	S87° 32' 50"W	246.46'



- LEGEND/ABBREVIATIONS**
- CL - CENTERLINE
 - Δ - DELTA (CENTRAL ANGLE)
 - AC - ACRES
 - CB - CHORD BEARING
 - CD - CHORD DISTANCE
 - DE - DRAINAGE EASEMENT
 - L - ARC LENGTH
 - LAE - LIMITED ACCESS EASEMENT
 - LB - LICENSED BUSINESS
 - LBE - LANDSCAPE BUFFER EASEMENT
 - LSE - LIFT STATION EASEMENT
 - O.R.B. - OFFICIAL RECORD BOOK
 - PB - PLAT BOOK
 - PG - PAGE
 - P.P.A.E. - PERPETUAL PUBLIC ACCESS EASEMENT
 - R - RADIUS
 - (R) - INDICATES RADIAL LINE
 - RB - INDICATES RADIAL BEARING
 - RBE - ROADWAY BUFFER EASEMENT
 - SF - SQUARE FEET
 - SUAE - SEACOAST UTILITY AUTHORITY EASEMENT
 - UE - UTILITY EASEMENT
 - PRM - DENOTES PERMANENT REFERENCE MONUMENT
5/8" IRON ROD WITH CAP STAMPED
"C&W PRM LB 3591"
 - - DENOTES PERMANENT CONTROL POINT
 - ✱ - INDICATES 1/4 SECTION CORNER
 - ✱ - INDICATES SECTION CORNER